

HFLOR SPC Click Installation & Maintenance Guidelines

Pertains LX Hausys collections of:

SPC PRESTG, PRESTG XL, PRESTG ARTISTRY, and SAVANA CLICK

1. Introduction

Floorcoverings designed and produced by LX Hausys America, Inc. as SPC PRESTG, PRESTG XL, ARTISTRY, SAVANA CLICK collections, are interior floorcovering products for floating applications only on suitable existing or new subfloors. Before installing, ensure that the installation site meets all applicable standards and always comply with recommendations of the building industry and local regulations. For All Season-Three Season Rooms and Radiant Heat Systems area installations, refer to special notes section 7.

2. Prior to Installation

Storage:

LX Hausys America, Inc. SPC CLICK must be stored lying down on a flat surface in a dry and ventilated area. Do not store floorcovering in very cold less than 0°F / 17°C) or very warm more than 95°F / 35°C or in an extreme humid environment.

Inspection:

Despite the care and rigor during production, a visual inspection of the materials before installation is recommended, such as, batch number, color, design, or possible defects. If any visual faults are detected on materials, do not install the faulty products and contact your local dealer to obtain information concerning the next step. LX Hausys America, Inc. recommends installing products with the same batch/lot number only in the same area. **Quality is not guaranteed for color/shade differences in different lot construction.**

Acclimation:

No acclimation is required for LX Hausys America, Inc. SPC CLICK. However, LX Hausys America, Inc. recommends leaving the materials at the installation site at least for one day at room temperature 50° ~90°F or 10° ~32°C with ideal indoor relative humidity to be at 30% ~70%. Portable heaters are not recommended, as they may not heat the room and subfloor sufficiently and consistently. After installation, make sure that the flooring is not exposed to temperatures less than 0°F /15°C or greater than 140°F / 60°C.

3. Suitable Subfloors

For LX Hausys America, Inc. SPC CLICK, no additional underlayment is required because IXPE underlay foam is attached. In addition, LX Hausys America, Inc. SPC CLICK is designed and produced for floating installation on existing subfloors with high tolerance variations, to reduce subfloors preparation operations. The table below gives an acceptance of the maximum subfloor's imperfections allowed for LX Hausys America, Inc. SPC installations. If your subfloor information is not available, please contact your local dealer or LX Hausys America, Inc. Technical Department at flooringtech@lxhausys.com

Subfloor	Installation
Concrete or cementitious screed	Yes – max. flatness tolerance 3/16" or less in 10'
Anhydrite (Gypsum) screed	Yes – max. flatness tolerance 3/16" or less in 10'
Ceramic tiles, stone, marble	Yes – max. size of joints: 5/16" width, 1/8" low or 3/32" high difference between tiles
Compact floorcovering (heterogeneous, homogeneous, linoleum)	Yes – if less than 10% of the surface is damaged. Localized subfloor preparation needs to be planned for damaged area
Floor painting or resin	Yes – if less than 10% of the surface is damaged. Localized subfloor preparation needs to be planned for damaged area
Floating laminate or LVT	No – remove existing floor before installation
Textile floors (carpet tiles, needlefelt, etc.)	No – remove existing floor before installation
Outside	NO – INSTALLATION PROHIBITED

4. Moisture Content in Subfloors

LX Hausys America, Inc. SPC CLICK is a highly moisture resistant product and recommends conducting flooring industries best practices with regard to moisture before installation. LX Hausys America, Inc. SPC Click should not be installed as a moisture control barrier. All moisture issues should be addressed prior to installation. The use of a minimum 6 mil / 0.15 mm poly-film as a moisture barrier between the concrete subfloor and the flooring is recommended for all concrete substrates. Seams must be taped.

Conduct moisture tests on substrates to verify acceptability:

- Wood substrates maximum 14% moisture content
- Concrete or screeds-maximum 85% RH per quantitative in-situ probes per (ASTM F2170) standards, or when using Anhydrous Calcium Chloride per (ASTM F1869) standards - maximum 5lbs./1000ft² MVER, or suitable non-destructive CMM electronic meter method per (ASTM F2659) standards for moisture content equivalent showing an average of 5% or less with a preferred standard minimum of 8 tests to be performed. Note: CMM moisture test method is an alternative method for qualifying moisture levels for residential installations only.

5. Overall Layout for Installation

Perimeter Expansion Gap:

LX Hausys America, Inc. SPC CLICK is dimensionally stable in cold or hot conditions compared to other PVC based products. However, proper expansion space still needs to be obtained at all walls and vertical obstructions for the floor to free float.

Check the overall installation site and the walls, and make sure to leave

HFLOR SPC Click Installation & Maintenance Guidelines

¼" / 6 mm minimum gap along all sides of the entire wall. In order to get the desired amount of gap, proper spacers should be utilized.

This perimeter expansion gap should be maintained at all types of vertical obstructions such as fixtures, pipes, columns, door frames, fixed furniture, etc.

Expansion Moldings:

For LX Hausys America, Inc. SPC Click, the maximum area that can be installed without an expansion joint or T-molding is 65'. For further information regarding proper expansion space needed, please contact the LX Hausys America, Inc. technical team at flooringtech@lxhausys.com for instructions 65' x 65'.

6. Installation (5Gi Locking System)

Note: LX Hausys America, Inc. SPC CLICK is designed for floating installations, which should not be fixed to the floor, to the wall or other blocking points. Installation of fixed furniture (example: fixed furniture elements such as an island for kitchen or dressing area) must be installed before the floor. LX Hausys America, Inc. cannot be responsible for any failure of the floorcovering if these minimum requirements are not followed during installation. Also, note to prepare appropriate tools for proper installation.

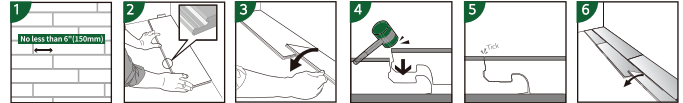
Prior to beginning installation, it is important to measure the area and avoid a minimum of at least 1/3 of the product width for the last row, and at least 12" / 30 cm length is available for the first and last piece in a row.

Work from several open boxes of flooring at a time and you may care to lay out a few rows without connecting the seams of the flooring before permanently installing the floor. This will allow you to select varying color/patterns and arrange them in a well-balanced arrangement to avoid similar repeats next to one another. Should an individual plank or tile be doubtful as to appearance or dimension, the installer should not use this piece. Once the material is installed, it is deemed acceptable by a homeowner/installer.

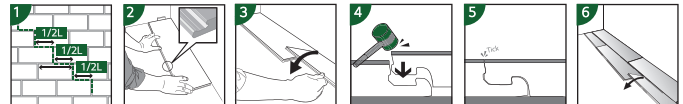
1) First row: Begin by installing planks/tiles from the left starting wall working towards the right with spacers in place at walls or if other vertical surfaces are present. The tongue of the product needs to face towards the wall and the grooved edge will be facing towards the next row to be completed. If full width of material is used at starting wall, cut tongue off before installing first row. Second plank or tile, place material gently close to the short end of first piece and drop down to connect into first piece with again the use of spacers at wall. Use rubber mallet on (short side) seam to achieve flush, tight seam before moving on to the next tile or plank with same procedure, being careful not to damage the profile or edges during seam engagements. Note: Tapping blocks may be needed to achieve tight straight seam at long joints. At the end of each row, again put a spacer at wall and measure the length of the last plank or tile to fit. Cut or score and break plank or tile to fit and complete row.

2) Second row: Always begin each row from the same side of room. Place spacer next to wall and then place the cut piece from prior first row if longer than 12" into first row's material's groove at 25° angle and continue as noted above.

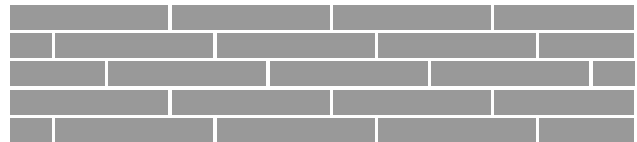
[Plank]



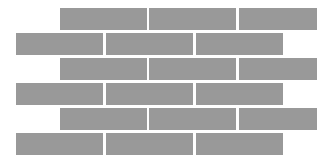
[Tile]



Note: Unless a specified visual is called out for, avoid continuous end joint stair stepping and H patterns. For best visual representation of your floor and overall locking strength, install planks in random patterns avoiding no less than 6" stagger of end joints with adjacent planks.



For tiles, use 1/2 tile offset method at long seam joints.



Offset

7. Special Notes

All Season – Three Season Rooms:

- Do not install LX Hausys America, Inc. SPC flooring in any outside areas, or seasonal porches
- Room must be completely enclosed (roof, floor, walls and windows) and must not be exposed to any outside elements
- SPC by LX Hausys America, Inc. is not recommended where the floor might experience temperature extremes below 0 °F / 15 °C or greater than 145 °F / 60 °C
- Occupied use temperature is assumed to be between 65 °F / 18 °C and 85 °F / 30 °C
- Maximum room size total of 5,000 sq.ft. with a 40 ft. maximum length either direction
- Installation must occur at room temperature of 50–90 °F or 10–32 °C with ideal indoor relative humidity to be at 30–70%
- Allow 3/8" (9.5 mm) expansion space around perimeter of room and all other vertical obstructions.

Radiant Heat Systems:

- Radiant heated floors where heat does not exceed 85 °F / 29 °C
- Contact the manufacture of your radiant heating system to ensure that the system is compatible with vinyl flooring and for specific recommendations

HFLOR SPC Click Installation & Maintenance Guidelines

- Installation directly over electric heat mat system is not approved
- Unless otherwise recommended:
 - The heating system components must a minimum of 1/2" / 13mm separation from the flooring product
 - Radiant heat systems must be turned on and in operation for several days before flooring installation to calibrate temperature settings and to reduce residual moisture within the concrete
 - The system must be turned down to 65°F / 18°C **72 hours** prior to and during the flooring installation
 - 24 hours after installation, slowly bring heating system up back up to normal operating temperature in increments of 5°F / -5°C maximum per day to avoid over heating
 - Floor should never be heated over 85°F / 30°C
 - Note: Rugs placed over radiant heat systems can increase the system's surface temperature

Protection:

- Protect installed flooring until the project is complete
- Use temporary hard board covering over the flooring for rolling of furniture or appliances
- Furniture, fixtures, equipment, appliances, and any other items contacting the floor should use footing, castor, glide or fitting designed for resilient floors, with at least a 1" flat surface area
- Wheels supporting rolling loads should be flat, not convex, with at least 1" flat surface area
- The use of non-staining walk-off mats at areas of building's ingress and egress will greatly enhance the appearance of a floor by reducing the amount of soil, dirt, sand, salt, grit, and other abrasive or soiling substances

8. Accessories and Finishing

- After the floor covering installation is completed, remove spacers and replace molding or wall base, allowing a slight clearance between the moldings and the planks/tile flooring. Nail the molding to the wall surface, not through the flooring
- At doorways and other areas where SPC flooring may meet other flooring surfaces, it is preferable to use T-molding or similar trim to cover the exposed edge making sure not to pinch the planks or tiles
- Use 100% silicone caulking at wet area gaps such as tub/shower fronts, toilet flanges etc., and where molding or trims are not applicable
- Protect LX Hausys America, Inc. SPC Flooring from exposure to peak direct sunlight exposure with the use of drapes, blinds, glass treatments/UV-tinting

9. Care & Maintenance

Regular Maintenance:

- Vacuum (without beater bar) and/or sweep often to prevent dirt build up or scratches
- Mix neutral PH cleaning solution and water for vinyl flooring use according to the dilution ratio as recommended by the cleaning liquid manufacturer
- Damp mop the floor with a micro fiber pad
- Additional cleaning may be necessary for hard to clean or stubborn areas. Always clean and rinse with clean water
- Avoid spills of paints, dyes, harsh chemicals, acid products, etc.
- Promptly remove any standing water, pet urine or other liquids
- Use a melamine pad to remove stubborn scuffs
- Do not use top coats or wax to maintain the floor

Use of Floor Care Chemicals:

- The improper use of cleaning chemicals may cause damage and/or discoloration. Overuse or inadequate rinsing of cleaning chemicals may compromise the performance of the floor
- Abrasive powders or cleansers should not be used. Do NOT use highly alkaline products (ammonia, soda) bleach or strong solvents such as acetone as they can be harmful to both people and to your floor